



LISA ALLEGRA



I am an artist who design, draw and shape everyday objects.

I approach form through drawing, but also through materials. Clay is my favourite one because it has the intrinsic power to be shaped by hand into an infinitely small or infinitely large object.

This enables me to imagine a variety of pieces, from lamps to dining tables and architectural elements.

My creations are conceived as collections and range.

These families of objects play with balance: pillars rising from the ground, a cushion suspended in mid-air, a large dome resting on slender legs.

The elements touch, lean on and support each other.

I am sensitive to «the presence of absence», of emptiness or of a counter-form.

John Pawson, Donald Judd and Rachel Whiteread are among the artists who inspire me in their search for the essential and the pure.

I seek to create forms that are both minimalist and warm, using earthy materials, rounded shapes and associations with other materials such as textiles and wood.

I incorporate new skills such as weaving, upholstery and carpentry to create objects that reflect my ideas and designs.

This choice to correlate my work as a designer with all these skills means that I am able to produce small series of handmade, long-lasting objects, for which I master both design and manufacture.

I work with brands and partners such as Cartier, Hermès, Galerie Philia, Chiara Colombini, Caroline Andréoni, Claude Home, The Webster and Sessùn.

I graduated in 2010 from the École des Arts Décoratifs in France

After working in various design studios in Paris, I joined the visual merchandising team of the brand Diptyque Paris. I was in charge of all of the creation of boutiques' windows worldwide.

I move to Barcelona in 2017 and found my own design studio in 2021 to develop my lamp and furniture collections.

- COLLECTIONS -

ARK

-

AUGUSTA

-

MOOR

-

MOOR plus brillance

-

KYRTOS & KOILOS

-

YRTO

-

ILIAKOS

-

ISTOS

-

MOJURA

-

ANATOLE

-

APPAREL

-

LES CAILLOUX

**ARK
COLLECTION**



CHAIR 63x57x88 cm

Ceramic piece - wood structure - hand-woven
cotton and linen fabric.



Almond





STOOL 63x57x58 cm

Ceramic piece - wood structure - hand-woven
cotton and linen fabric.







SIDE TABLE 63x57x50 cm

Piece in ceramic and mat varnished oak.



Almond





DESK 145x65x74 cm

Piece in ceramic and mat varnished oak.



Almond





FLOOR LIGHT - M 20x20x140 cm

Ceramic piece with cotton-covered lampshade.







FLOOR LIGHT - L 40x40x140 cm

Ceramic piece with cotton-covered lampshade.



Almond





**AUGUSTA
COLLECTION**



COFFEE TABLE - SINGLE - ø51,5x39 cm

COFFEE TABLE - DOUBLE - 82x51,5x45 cm



Almond

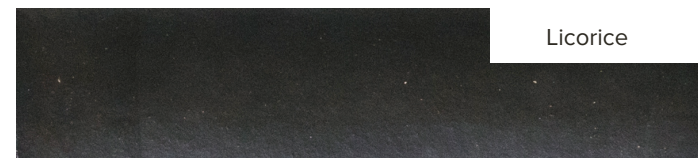
**MOOR
COLLECTION**





TABLES

SIDE TABLE - S ø32x35 cm



Licorice



Almond

SIDE TABLE - M ø42x47 cm



Almond





BED BASE (4 PIECES)

Head (x2) 42x21x47 cm

Bottom (x2) ø21x25 cm



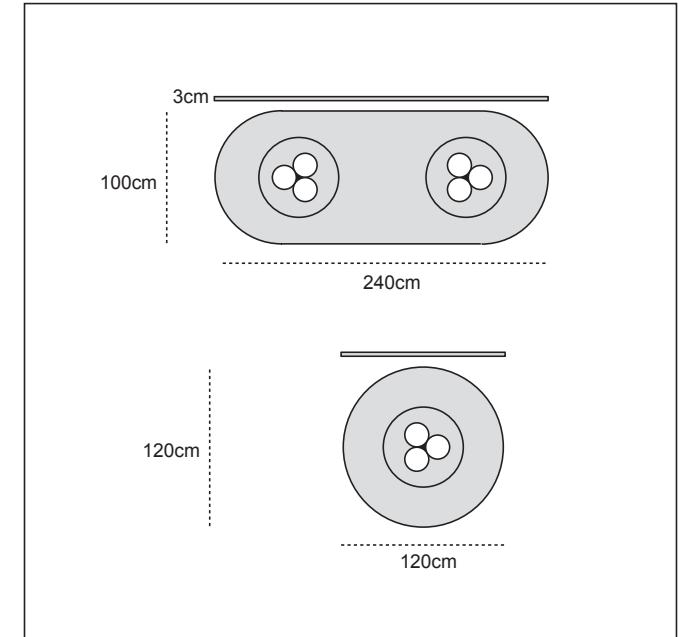
Almond





DINING TABLE $\varnothing 100 \times 75$ cm

Piece in ceramic and mat varnished oak.







SHELF 35x30x10 cm

Piece in ceramic and mat varnished oak.



Almond





LAMPS

TABLE LIGHT HALF-SPHERE - S ø20x27 cm





TABLE LIGHT HALF-SPHERE - M ø30x48 cm





TABLE LIGHT - M ø25x53 cm



WALL LIGHT 24x17x25,5 cm



Licorice



Almond



PENDANT LIGHT ø24x25,5 cm





FLOOR LIGHT - L ø46x80 cm



Almond



FLOOR LIGHT - XL ø47x146 cm



Almond





PLANTER

PLANTER ø30x54 cm



Almond

VASE 24x17x25,5 cm





MOOR plus brilliance
COLLECTION





TABLE LIGHT HALF-SPHERE - S ø20x27 cm

TABLE LIGHT HALF-SPHERE - M ø30x48 cm

WALL LIGHT 24x17x25,5 cm

VASE 24x17x25,5 cm

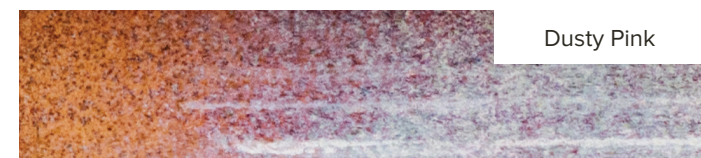
SHELF 35x30x10 cm



Almond



Blackened Gold



Dusty Pink



Pearl

















**KYRTOS & KOILOS
COLLECTION**

KOILOS WALL LIGHT 22x12,5x33,5 cm



Almond



KYRTOS WALL LIGHT 22x16x33,5 cm



Almond



KYRTOS TABLE LIGHT 22x15x33,5 cm



Almond





**YRTO
COLLECTION**

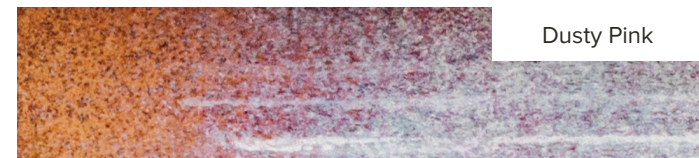
WALL LIGHT - S ø8x30 cm



Almond



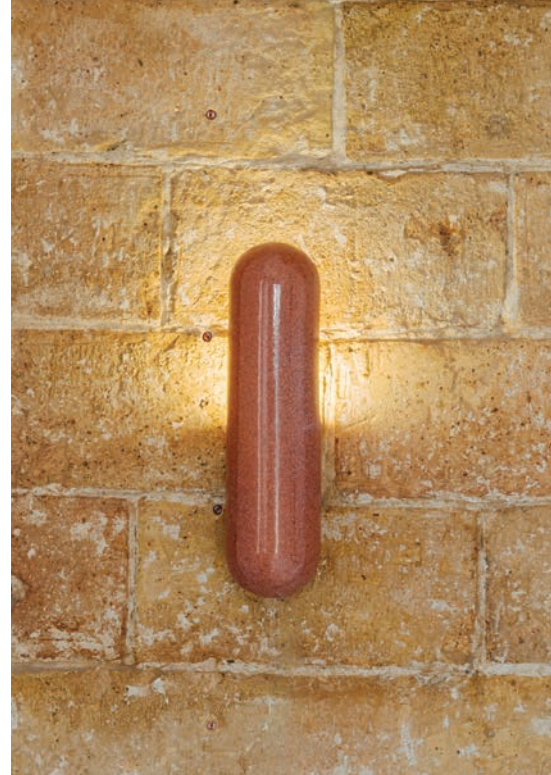
Blackened Gold



Dusty Pink

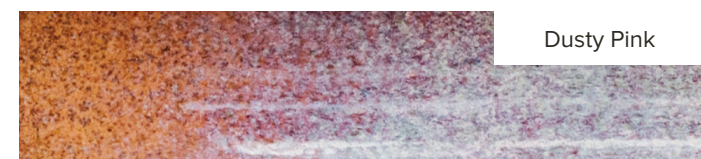
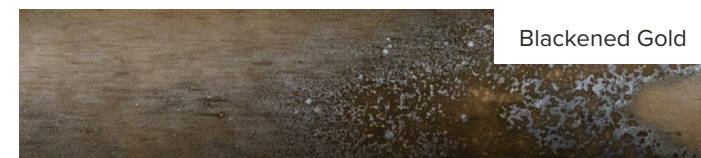


Pearl





WALL LIGHT - M ø8x50 cm



WALL LIGHT - DOUBLE - 16x8x30 cm



Almond



Blackened Gold



Dusty Pink



Pearl



PENDANT LIGHT - SINGLE - ø8x30 cm



Almond

PENDANT LIGHT - DOUBLE - 16x8x33 cm



Almond

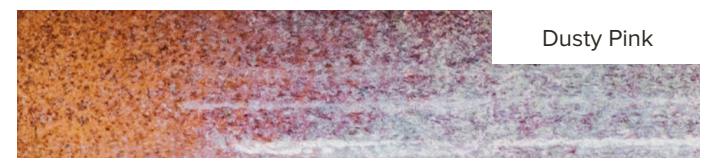
PENDANT LIGHT - TRIPLE - ø16x40 cm



Almond



TABLE LIGHT - S ø8x27 cm

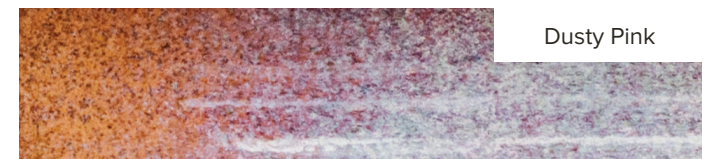




CANDLE HOLDER / VASE - ø8x27 cm



Blackened Gold



Dusty Pink



Pearl

VASE ø8x27 cm



Blackened Gold



Dusty Pink



Pearl

**ILIAKOS
COLLECTION**

WALL LIGHT 12x8x54 cm



Blackened Gold



Pearl





**ISTOS
COLLECTION**



WALL LIGHT - S 11,5x7x21,5 cm

Piece in ceramic and Dedar fireproofed fabric
color Ivory



Almond





WALL LIGHT - M 23x13x34 cm

Piece in ceramic and Dedar fireproofed fabric
color Ivory



Almond



Embroidered 1 WALL LIGHT 23x13x34 cm

Piece in ceramic and Dedar fireproofed fabric
color Ivory and hand-made black embroidery

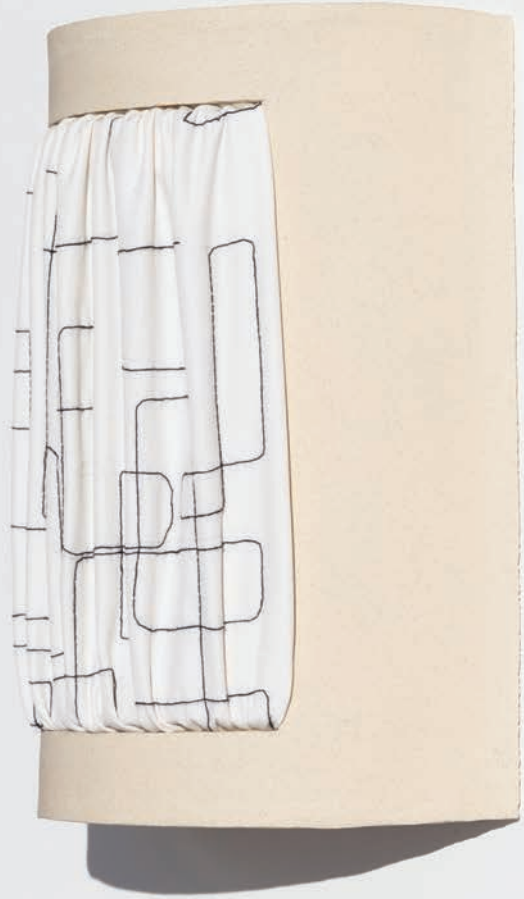




Embroidered 2 WALL LIGHT 23x13x34 cm

Piece in ceramic and Dedar fireproofed fabric
color Ivory and hand-made black embroidery





Embroidered 3 & 4 WALL LIGHTS 23x13x34 cm

Piece in ceramic and Dedar fireproofed fabric
color Ivory and hand-made Ivory embroidery







**MOJURA
COLLECTION**

WALL LIGHT 21x11,5x40 cm

The centerpiece can be changed as you wish :

The lamp in Pearl finish includes a set of 3 shapes in Blackened Gold finish : circle, square, triangle.

The lamp in Blackened Gold finish includes a set of 3 shapes in Pearl finish : circle, square, triangle.



Blackened Gold



Pearl



VASE ø22x40 cm



Blackened Gold



Pearl

**ANATOLE
COLLECTION**

CIRCLE WALL LIGHT \varnothing 38x17 cm

SQUARE WALL LIGHT 36x36x17 cm

Piece in ceramic and Dedar fireproofed fabric
color Ivory







**APPAREL
COLLECTION**



LA DOUDOUNE 35x16x13 cm

LE COLLIER 21x11x25,5 cm

LE SAC 18x12x35 cm

LE POCHE 23x11x26 cm

LE DRAPÉ 19x11x26cm

Porcelain











**LES CAILLOUX
COLLECTION**



LES RAYURES ø25x40 cm

Piece in ceramic and felt.

LE HALO ø25x40 cm



LA COLLERETTE ø25x40 cm





HANDMADE CERAMICS

lisaallegra.fr

[instagram.com/_lisaallegra_](https://www.instagram.com/_lisaallegra_)

contact@lisaallegra.fr